

Mounting details Agitator gearbox / stirrer

Changing buckets, paddles and shovels

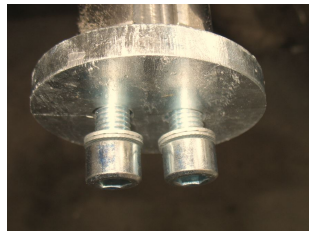
To change the buckets, paddles and shovels you have to do the following steps.

1. Before starting any workings at the recycling device you have to **switch off the electrical power and secure it against reswitching!**

2. Remove the shaft cover



3. Unscrew the stirrer (two screws on top of the stirrer shaft) and secure it against slipping out



4. Remove all screws from the motors deck plate



5. Remove the motors deck plate



6. Remove all nuts from the gear box underneath the gearbox plate (same as on deck plate)
7. Remove the gearbox including elastic kit
8. Mount the elastic kit (studs) into the new gear box (short studs on the downside; long studs on the upper side)
9. Reinstall everything in the opposite way round

